

**BOARD OF TRUSTEES**

Tim Fulton, President.....District 6  
Joe Schiffer, V.P.....District 5  
Arlo Jensen, Sec.-Treas.....District 1  
Jim DeCock.....District 7  
Steve Nile.....District 4  
J. Allen Baue.....District 2  
Richard Pinkerton.....District 3

**OFFICE HOURS**

Monday through Friday  
8 a.m. to 5 p.m.

**406-342-5521**

**MID-YELLOWSTONE  
ELECTRIC  
COOPERATIVE, INC.**



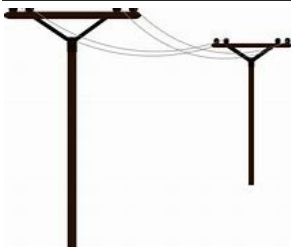
**OFFICE PERSONNEL**

Jason Brothen.....Manager  
Marj Cunningham.....Office Mgr  
Karen Morales.....Billing Clerk  
Amy Robbins.....Cust. Serv. Rep.

**LINE PERSONNEL**

Ken Rolandson....Operations Mgr  
Rick Lewis.....Foreman  
Daren Reeder.....Lineman  
Trent Perkins.....Lineman  
John Cunningham...Appr.Lineman

P.O. BOX 386, HYSHAM, MT 59038



**ALONG THESE LINES . . .**



***ANOTHER REMINDER: DON'T WAIT UNTIL THE LAST MINUTE***

If you are planning to have your Cooperative install a new electric service, don't wait until the last minute to let us know. Transformers may need to be ordered for your project which could require several months lead time.

Transformers are very expensive. Irrigation projects require transformers that do not use common residential voltages, and, we cannot stock all the sizes and voltages that you may require. Before we order these special transformers for your project, you will need to execute your contract for service, pay the required construction cost, and execute an easement for the power line. You or your electrician will need to file an application for electrical permit.

Large projects may need a year or more lead time. An irrigation project of several hundred horsepower or more is considered a large project. Power lines or even a substation may need to be upgraded. The delivery on new substation transformers may take more than a year. Substation transformers are very expensive—perhaps hundreds of thousands of dollars. Large projects may need to pay large sums of money to be able to incorporate them into the electrical grid.

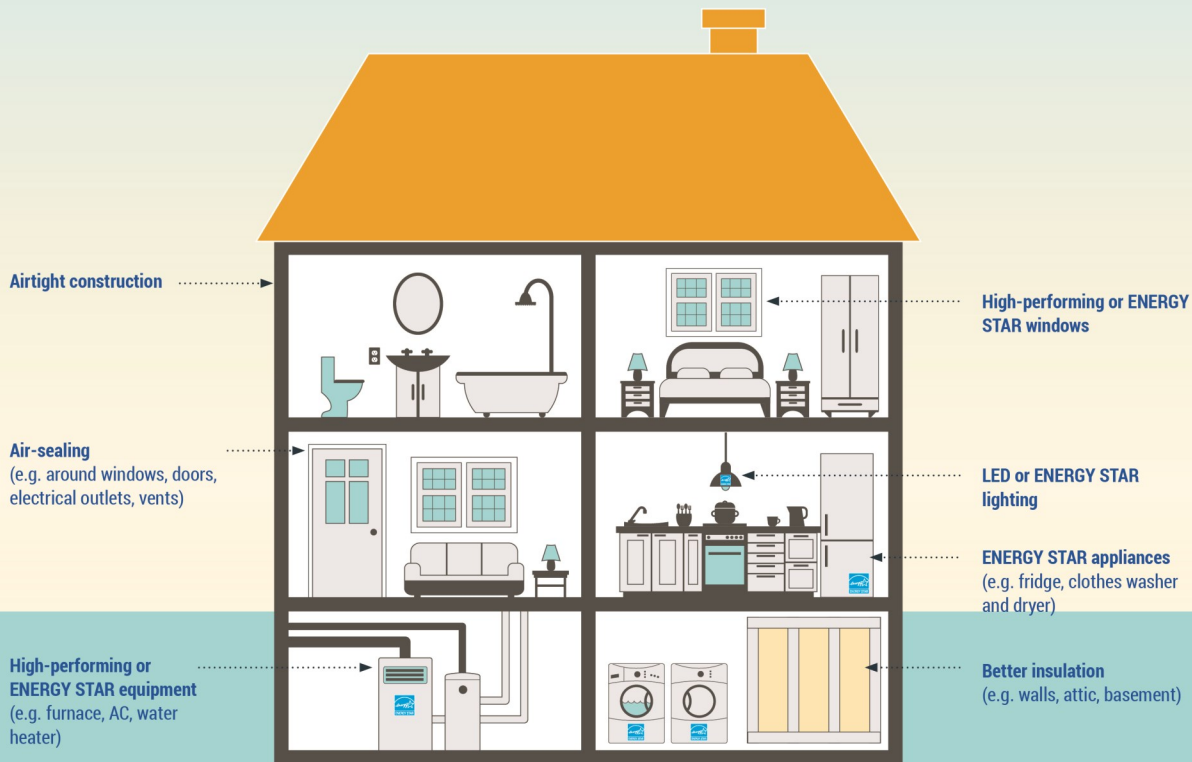
Also, April and May are busy months for your Cooperative. If at all possible, plan your projects to avoid electric line construction during those two months. In addition, April and May are hit-and-miss with regard to weather. If April and May are rainy and/or snowy, construction will be delayed accordingly. To be safe, new irrigation pumping projects should be constructed during the fall prior to the year you would like to irrigate.

**EVERYTHING TAKES TIME—DON'T WAIT UNTIL THE LAST MINUTE.**

**SUMMER IS CONSTRUCTION TIME**  
**Remember to obtain an electrical permit...**

**This institution is an equal opportunity provider and employer.**

**A house that uses energy more efficiently is a happy home.  
What makes a home energy-efficient?**



Learn how to make homes more energy efficient, more valuable, and more comfortable at [nrcan.gc.ca/homes](http://nrcan.gc.ca/homes)

**MID-YELLOWSTONE ELECTRIC COOPERATIVE, INC.**

**Landscape safely away from transformer cabinet**

If your home is served by underground electric cable, you may be tempted to plant some flowers or shrubs nearby to disguise that transformer cabinet. **Don't do it!**

Our line crews need easy access to that cabinet to perform maintenance and repairs. Your plantings would block access.

There is another reason to keep plantings away from the transformer. It is dangerous! The cabinet contains high-voltage lines that should be avoided by untrained personnel. You would be in danger while planting and caring for your shrubs or flowers.

So please remember to give your transformer cabinet a wide berth — and teach your children to stay away, too. Warn them not to play around the cabinet. And never open it!

**Put safety first!!**



**REMEMBER TO READ YOUR METER(S) ON THE 20TH—**

Call it into the office, enter it online or mail it using a meter reading card — if mailing, please send it as soon as you can so it can be entered before the bills are processed. Thank you!

*"Neighbors helping neighbors. That's the electric cooperative tradition." ...Glenn English, CEO, NRECA*