

BOARD OF TRUSTEES

Tim Fulton, President.....District 6
 Joe Schiffer, V.P.....District 5
 J. Allen Baue, S/T.....District 2
 Reese Stahl.....District 1
 Richard Pinkerton.....District 3
 Steve Nile.....District 4
 Dennis Johnson.....District 7

OFFICE HOURS

Monday through Thursday
 7 a.m. to 5:30 p.m.

406-342-5521

MID-YELLOWSTONE ELECTRIC COOPERATIVE, INC.



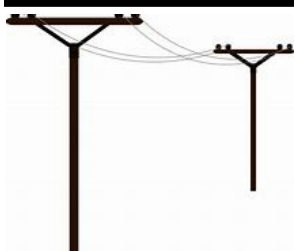
OFFICE PERSONNEL

Jason Brothen.....Manager
 Marj Cunningham.....Office Mgr
 Karen Morales.....Billing Clerk
 Jessica Thompson..Cust.Serv.Rep.

LINE PERSONNEL

Ken Rolandson....Operations Mgr
 Daren Reeder.....Lineman
 Trent Perkins.....Lineman
 John Cunningham...Appr.Lineman
 Brent Battenfeld.....Lineman
 Tyler Fennern.....Appr.Lineman

P.O. BOX 386, HYSHAM, MT 59038



ALONG THESE LINES ...



MYEC'S 2025 RATE INCREASE

The substantial rise in wholesale power costs, along with escalating material and equipment expenses, has prompted Mid-Yellowstone Electric Cooperative (MYEC) to conduct an annual cost-of-service study. This study evaluates both fixed and variable costs, revealing that MYEC is not generating enough revenue to cover its operational expenses. A small rate increase was implemented in January 2024. Prior to that, MYEC had not had a rate increase since 2011. The rising costs from power suppliers and increased material and equipment prices will necessitate another rate adjustment in 2025.

MYEC receives power from Basin Electric Power Cooperative (BEPC) and Western Area Power Administration (WAPA). Both suppliers are experiencing a rise in demand for electricity, while the supply of power continues to be influenced by technology and policy. As a result, both BEPC and WAPA will be raising their power costs at the start of next year.

To help members manage their energy bills, MYEC provides various resources. The SmartHub mobile app enables members to track their daily usage and offers convenient ways to pay. There are also multiple payment options available that are shown on the bottom of Page 2 on each monthly statement. Budget billing helps mitigate fluctuations by taking an average of the previous 12 month's usage and calculating an even, or close to even, monthly payment. Additionally, MYEC shares energy efficiency tips through its monthly magazine and social media platforms.

As a not-for-profit electric cooperative, MYEC returns margins to its members so there is no incentive to raise rates more than necessary. Our mission is to serve our members with safe, reliable, and affordable electricity. Despite the upcoming rate adjustment, the cost of electricity remains a great value considering all the ways we depend on it.

HOLIDAYS IN HYSHAM - Friday, December 6 - See you there!

This institution is an equal opportunity provider and employer.

Rural Montana

LIHEAP, LIHWAP and Weatherization Programs
2024-2025 Program Year
 Annual Income Levels

Household Size	LIHEAP & CRF	WZ Limits
1	\$32,102	\$30,120
2	\$41,979	\$40,880
3	\$51,857	\$51,640
4	\$61,735	\$62,400
5	\$71,612	\$73,160
6	\$81,490	\$83,920

Manage Your Account



Use SmartHub to...

- Pay Your Bill
- Check Your Energy Usage
- Set Up Auto Bank Drafts
- Update Account Info
- Contact Member Services

Safe, secure & fast!



ENERGY EFFICIENCY

Tip of the Month

Water heating accounts for a large portion of home energy bills. To save energy (and money) used for water heating, repair any leaky faucets, install low-flow fixtures and insulate accessible hot water lines. When it's time to purchase a new washing machine or dishwasher, look for models that are ENERGY STAR®-certified.



ENERGY SHARE OF MONTANA

This helps Montana residents faced with energy emergencies meet their needs and move toward self-reliance. Eligibility for Energy Share is not determined solely on income but also on the extenuating circumstances a household is facing. Energy Share is primarily funded by State-mandated Universal System Benefits Program (USBP) charges, donations from private individuals and corporations, and repayments by previous recipients.

Often, families who live from paycheck to paycheck face some type of financial emergency when an unexpected expense occurs. This could be something like a vehicle break down, lay off from work, or medical expense/emergency.

Energy Share is the only assistance available to Montana families who have income too high to qualify for LIHEAP assistance. If applying for Energy Share during the heating season (October-April), you must apply for LIHEAP as well. If applicants are ineligible for LIHEAP or are still in need of assistance once receiving a LIHEAP benefit, they can apply for Energy Share.

Applications are available at MYEC, or online at aemt.org/energy-programs.

MID-YELLOWSTONE ELECTRIC COOPERATIVE, INC.