

## BOARD OF TRUSTEES

Tim Fulton, President.....District 6  
 Joe Schiffer, V.P.....District 5  
 J. Allen Baue, S/T.....District 2  
 Reese Stahl.....District 1  
 Richard Pinkerton.....District 3  
 Steve Nile.....District 4  
 Dennis Johnson.....District 7

## OFFICE HOURS

Monday through Thursday  
 7 a.m. to 5:30 p.m.

406-342-5521

## MID-YELLOWSTONE ELECTRIC COOPERATIVE, INC.



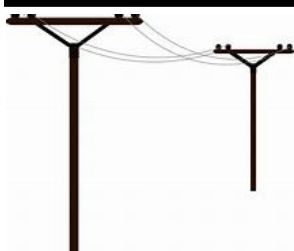
## OFFICE PERSONNEL

Jason Brothen.....CEO  
 Marj Cunningham.....Office Mgr  
 Karen Morales.....Billing Clerk  
 Jessica Welch.....Cust.Serv.Rep.

## LINE PERSONNEL

Ken Rolandson....Operations Mgr  
 Daren Reeder.....Lineman  
 Trent Perkins.....Lineman  
 John Cunningham.....Lineman  
 Brent Battenfeld.....Lineman  
 Tyler Fennern.....Appr.Lineman  
 Ryan Silvis.....Appr.Lineman

P.O. BOX 386, HYSHAM, MT 59038



ALONG THESE LINES ...



## ELECTRICAL SAFETY TIPS FOR THE HARVEST SEASON

Harvest season is a great time of the year when a farmer sees the achievement made from all of the hard work done in the summer to prepare for the gathering of the crops in the fall. But when a person is not focused on his/her surroundings, accidents can happen. Here are a few tips to remind you, our member, to be aware of during this year's harvest season while working near electricity. Be alert and stay safe!!

- **Maintain a safe distance:** Keep a minimum of 10 feet of clearance between any equipment and power lines. This includes all directions—up, down, and sideways.
- **Use a spotter:** When operating large machinery, especially around power lines, have a spotter to guide you and ensure you maintain the necessary clearance.
- **Inspect equipment and cords:** Regularly check power cords, extension cords, and electrical tools for any signs of wear and tear, such as frayed wires or damaged insulation.
- **Be aware of overhead power lines:** Be mindful of power lines when raising dump truck beds or operating equipment with high clearance.
- **Never touch a down power line:** If your equipment contacts a power line, stay inside the vehicle and call 911 immediately.
- **If there is a fire:** If there is a fire and you must exit the vehicle, jump out with both feet together, without touching the vehicle and the ground at the same time, then hop or shuffle away.
- **Qualified professionals:** Ensure that qualified electricians handle any work on drying equipment or other farm electrical systems.
- **Know your shut-off:** Know where and how to shut off the power in an emergency.

Source: Internet

"Neighbors helping neighbors. That's the electric cooperative tradition." ...Glenn English, CEO, NRECA

This institution is an equal opportunity provider and employer.

Rural Montana



## 2025 NATIONAL CO-OP MONTH

From farmer co-ops to worker co-ops, credit unions to mutual insurance, and housing co-ops to energy co-ops, co-operative businesses thrive across the U.S. economy, where one in three people are co-op members. Around the world, around 1 billion people are members of about 3 million co-operatives, and 10% of the world's population, or around 280 million people, are employed by co-ops. And because they are member-owned, co-operatives are rooted in their communities and governed by the people who use them to meet their needs.

Source: Internet

### A SALUTE TO OUR CO-OP MEMBERS—

MEMBERS	are the most important people in our business.
MEMBERS	are not an interruption to our work; they are the purpose of it.
MEMBERS	are not dependent on us; we are dependent on them.
MEMBERS	do us a favor when they come in. We aren't doing them a favor by waiting on them.
MEMBERS	are a part of our business, not outsiders.
MEMBERS	are not just money in the cash register. They are human beings with feelings and deserve to be treated with respect.

OCTOBER 2025

## 2026 YOUTH TOUR

Sophomores & Juniors  
—Write an essay and win an all-expense-paid trip to Washington D.C.

For more information call MYEC or talk to your school guidance counselor. **Essays are due by December 2, 2025.**

Students, please note that a new contest rule has been added: **5. Cooperatives may run an applicant's essay through an AI detection program. Use of AI could prevent the application from being considered.**

**SAVE \$\$  
PAY YOUR BILL  
BY THE  
DUE DATE!!**

### Manage Your Account



#### Use SmartHub to...

- Pay Your Bill
- Check Your Energy Usage
- Set Up Auto Bank Drafts
- Update Account Info
- Contact Member Services

**Safe, secure & fast!**



**MID-YELLOWSTONE ELECTRIC COOPERATIVE, INC.**