

BOARD OF TRUSTEES
Kevan Kimball, Pres.....Myers/Big Horn
Steve Nile, V.Pres.....Howard Flat
Jim DeCock, Sec.-Treas....Hysham Rural
Joe Schiffer.....Rosebud/Cartersville
Arlo Jensen.....Town of Hysham
Tim Fulton.....Ingomar/Hammond
Richard Pinkerton.....Sarpy

OFFICE HOURS
Monday through Friday
8 a.m. to 5 p.m.

406-342-5521

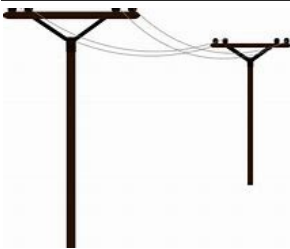
**MID-YELLOWSTONE
ELECTRIC
COOPERATIVE, INC.**



OFFICE PERSONNEL
Jason Brothen.....Manager
Marj Cunningham.....Office Mgr
Karen Morales.....Billing Clerk
Patti Lang.....Cashier

LINE PERSONNEL
Ken Rolandson.....Foreman
Rick Lewis.....Sub Foreman
Daren Reeder.....Lineman
Trent Perkins.....Lineman
Shane Freese.....Lineman
Ilya Jankunas.....Appr.Lineman
John Cunningham...Appr.Lineman

P.O. BOX 386, HYSHAM, MT 59038



ALONG THESE LINES . . .



DEMAND (kW) CHARGES AND IRRIGATION METER READING DATES

“Why does Mid-Yellowstone Electric Cooperative (MYEC) have both a demand (kW) charge and an energy (kWH) charge for irrigation billing?” The simple answer is that MYEC is billed by our power supplier in that way. MYEC’s power bill is then passed on to the member based on their energy and demand needs or requirements. The larger the motor, the higher the demand.

Our wholesale power supplier invoices MYEC on a calendar-month basis. They read our wholesale electric meters on the last day of each month at midnight. It is MYEC’s intent to read our irrigation meters as close to that time as possible. Once you have irrigated during a calendar month, you can start your pump as many times as you want during that same month and still pay for only one maximum kW demand charge. If you are planning to start your pump for the first time during the month and it is close to the end of the month, waiting until the 1st of the next month can save you that month’s demand charge.

For example, assume you have a 100 HP irrigation pump and the date is May 30th. You have not ran the pump yet this month. If you start the pump on the 30th and run the pump into June, you will be billed about \$715 (100 HP X .746=74.6 kW X \$9.58 per kW) kW demand charge for the month of May for only two days of pumping; and you will also be billed \$715 for demand charges for June. Demand on a motor will vary based on how hard the motor has to work. MYEC uses a meter that measures and records the actual maximum kW/demand reading. We used a conversion factor of .746 to convert HP to kW for this example.

Some irrigators feel that they can start their pumps immediately after our linemen read their pump meters even though they haven’t pumped yet during the calendar month. That is not the case as was explained from the example above. To sum all this up, **if you plan to irrigate for the first time in a calendar month and it’s close to the end of the month, wait until the 1st of the next month if possible.**

WATCH FOR OUR LINES WHEN MOVING EQUIPMENT AND IRRIGATION PIPE . . .

This institution is an equal opportunity provider and employer.

Remember to obtain an electrical permit
 We need to remind those of you who are building homes or moving a trailer home—as well as those of you who are putting in a new stock well or irrigation pump service—to remember to obtain an electrical permit. Until our office receives a copy of your permit, we are not allowed to energize the service.

Your Cooperative will read meters this month.

Take a break!



Manage Your Account



Use SmartHub to...

- Pay Your Bill
- Check Your Energy Usage
- Set Up Auto Bank Drafts
- Update Account Info
- Contact Member Services

Safe, secure & fast!

SPRINGTIME IS PLANTING TIME—
 DON'T PLANT THAT TREE UNDER A POWER LINE!

The meter reading booklets will be mailed out next month.
 If we miss you, let us know!

Call 1-844-344-4363 to pay your bill by phone

Daniel Hopf wins DC tour

Mid-Yellowstone sponsors essay winner

A Hysham High School student has been selected as one of 27 Montana winners of an all-expense paid trip to Washington D.C., courtesy of Mid-Yellowstone Electric Cooperative. This is the nineteenth year that MYEC has sponsored a winner for the Youth Tour program.

three essays submitted to MYEC by eligible students in the service area who wrote on the topic: "How can electricity be used to save and improve lives, especially in developing nations?"

Daniel Hopf, son of Chuck and Chrissy Hopf, will tour the nation's capital June 19-26 as part of the "Youth to Washington" Tour sponsored by the National Rural Electric Cooperative Association. The Montana youth will join more than 1,400 students from 40 states for the seven-day tour.



Hopf's essay was one of

IN CASE OF OUTAGE:

Day or Night

CALL
 406-342-5521
 or 888-392-5521

BEFORE YOU CALL...

1. Check all breakers and fuses in the building.
2. Check the breakers below your meter.
3. Check to see if your neighbors have power.