

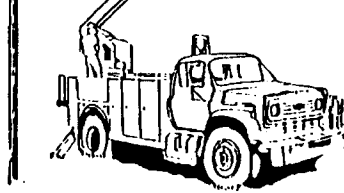
**BOARD OF TRUSTEES**

Kevan Kimball, Pres.....Myers/Big Horn  
 Steve Nile, V.Pres.....Howard Flat  
 Jim DeCock, Sec.-Treas....Hysham Rural  
 Joe Schiffer.....Rosebud/Cartersville  
 Arlo Jensen.....Town of Hysham  
 Tim Fulton.....Ingomar/Hammond  
 Richard Pinkerton.....Sarpy

**OFFICE HOURS**

Monday through Friday  
 8 a.m. to 5 p.m.  
 Closed at noon  
**406-342-5521**

**MID-YELLOWSTONE  
 ELECTRIC  
 COOPERATIVE, INC.**



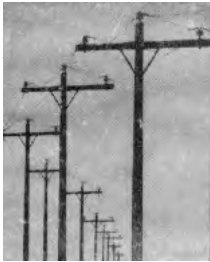
**OFFICE PERSONNEL**

Jason Brothen.....Manager  
 Marj Cunningham.....Office Mgr  
 Karen Morales.....Billing Clerk  
 Patti Lang.....Cashier

**LINE PERSONNEL**

Ken Rolandson.....Foreman  
 Rick Lewis.....Sub Foreman  
 Daren Reeder.....Lineman  
 Trent Perkins.....Lineman  
 Shane Freese.....Lineman  
 Ilya Jankunas.....Appr.Lineman  
 John Cunningham...Appr.Lineman

**P.O. BOX 386, HYSHAM, MT 59038**



**ALONG THESE LINES . . .**



***HOLIDAYS IN HYSHAM***

In the November issue, you read about the Chamber of Commerce’s ‘Holidays in Hysham’ festivities that were to be held on December 6th. The cool, but pleasant, evening began with caroling around the big tree at the school. At 6:00 sharp, MYEC lit the tree and the parade began. The linemen constructed a float that had two Christmas trees made out of rope lights and a sleigh being pulled by reindeer. The main feature was a three tiered cake made out of three different sizes of wire reels. The theme of the float was “Happy 100th Birthday Treasure County”.

Also shown below are Mrs. Klein’s First and Second Grade classes after they so nicely decorated our tree in the office entry way. Stop by and see the ornaments that they made for MYEC’s tree.



**This institution is an equal opportunity provider and employer.**

## ***Protecting and Managing Electronic Devices Before or During an Outage***

Outages can come without warning, or some times they are planned and your Cooperative gives you notice of the outage to come. Either way, it is important to do your best to be prepared in the event of a power outage. Of course, the first thing to do is to develop an emergency plan, including lists of critical phone numbers. Pack and keep emergency and first aid kits readily accessible. But, have you ever thought about the importance of protecting and managing your electronic devices? Here are some examples of how you can, and should, do that.

1. **Charge your cell phone.** Do your best to keep your phone fully charged before an outage strikes. Try to maintain a full battery by shutting off any unused apps and minimizing the brightness of your screen. Shifting your phone into airplane mode will also help to keep the battery full.
2. **Disconnect all surge-prone devices.** Before a storm hits, go through your house and turn off all electronic items that could suffer from a power surge. Even with surge protectors, laptops, TVs, and certain appliances, such as stand-alone microwaves, could be damaged if not unplugged.
3. **Purchase extra batteries or chargers.** For small electronics that you would like to use during an outage, such as a cell phone, include extra charging devices in your emergency kit. A car charger, for example, can help keep your cell phone powered up. Additional batteries can help keep your flashlights going.
4. **Store electronic information on a flash drive or the Cloud.** In the event that the power is out for an extended period, there may be some important documents, like insurance coverage materials, that you need to access. Keeping copies of these items on a portable drive or Cloud location makes it possible to access them anywhere.
5. **Purchase and learn to operate a home generator.** Choosing a generator can be a tricky process. It is often best to consult with an electrician who can instruct you regarding how to buy, install, and work your generator. Some generators tie directly into the home power source, whereas others are portable, but provide less overall power. Operating a generator safely is extremely important, as they can put off toxic fumes if not properly ventilated or installed.
6. **Know how to manually release your garage door.** Many doors operate with electricity and you may want to drive your car even while your power is still off. First you'll need to locate your door's release lever. It may look like a plastic handle attached at the end of a rope towards the back of your garage or a metal slide-lever to the side of the doors. Practice lifting this release lever to manually raise your garage door without using electricity.

Source: *Internet*

### **Remember Students!**

**High school seniors and college undergrads may apply for a \$500 scholarship available through the Montana Electric Cooperatives Association.**

The \$500 scholarship recipient will be chosen from the Southeast District of cooperatives which consists of 5 co-ops instead of statewide as it has been in the past.

Application forms are available from the school guidance counselor or from our office. Applications are due by January 13, 2020.

**High school seniors and college undergrads may apply for a \$1000 scholarship that will be awarded by Basin Electric Power Cooperative to a dependent of a Mid-Yellowstone Electric Cooperative member.**

Application forms are available from the school guidance counselor or from our office. Completed applications must be sent to Mid-Yellowstone Electric Cooperative by February 10, 2020.



**PLEASE  
READ YOUR METER  
ON THE  
20<sup>th</sup>**

**Mail your card,  
call us toll-free at  
1-888-392-5521  
or  
enter your reading  
on-line**