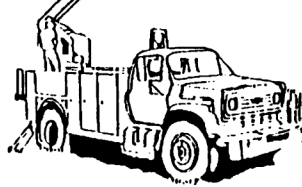


BOARD OF TRUSTEES
Steve Nile, Pres.....District 4
Arlo Jensen, Sec.-Treas.....District 1
Joe Schiffer.....District 5
Jim DeCock.....District 7
Tim Fulton.....District 6
Richard Pinkerton.....District 3
Tami Kimball.....District 2

OFFICE HOURS
Monday through Friday
8 a.m. to 5 p.m.

406-342-5521

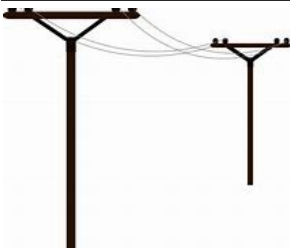
**MID-YELLOWSTONE
ELECTRIC
COOPERATIVE, INC.**



OFFICE PERSONNEL
Jason Brothen.....Manager
Marj Cunningham.....Office Mgr
Karen Morales.....Billing Clerk
Amy Robbins.....Cust. Serv. Rep.

LINE PERSONNEL
Ken Rolandson....Operations Mgr
Rick Lewis.....Foreman
Daren Reeder.....Lineman
Trent Perkins.....Lineman
Shane Freese.....Lineman
Ilya Jankunas.....Appr.Lineman
John Cunningham...Appr.Lineman

P.O. BOX 386, HYSHAM, MT 59038



ALONG THESE LINES . . .



Top 8 Electrical Safety Tips

We may think we know all there is to know about the dangers of electrical mishaps, but there are still electrical safety rules to be strictly observed.

Here are some tips to help you maintain proper caution, to help keep you and your family safe around the house, and to avoid electrical fires and accidents:

1. Make it a habit to turn off electric games and appliances when they are not in use. Before going to bed, make it a routine to check that all electrical devices not in use are properly shut off.
2. Leaving your cell phone charger cord plugged into the electric socket without the phone attached to it can be a hazard to your young children. If your child puts the phone-end of the cord into his/her mouth, he/she will receive an electrical shock because it is like a hot wire.
3. Never ever overload sockets. It's a safe bet to always use just one plug in every socket. Even if you are using the adapter make sure it's the bar type that also has a fuse. The total output of all plugs in the adapter should be no more than the specified rating.
4. Adding a residual current device is an easy way to cut off power and prevent shocks. Another sensible option is to fix one on the fuse box. Alternately, you can choose a portable one, which are ideal for outdoor jobs such as using the lawnmower or vacuum cleaner.
5. It's a good idea to periodically keep an eye on the condition of the plugs and sockets. You should pay attention to any burnt or frayed wires on appliances. It's best to get the services of a professional electrician to fix such problems.
6. Never allow wires or leads to run under carpets where they remain invisible. Besides being a tripping hazard, its hard to see the state of the cables or wires.
7. Never ever allow electric wires or cables to trail over kitchen appliances like toasters or stove tops. These are very dangerous and are hazards of the worst kind. Also, never place anything metal in the toaster, or anything that is not directed to be put in them.
8. Be careful when pounding nails or cutting holes into the walls of your home. It's a potential danger since you may not know what is behind your point of entry. And you should also take care when digging or excavating as you run the risk of cutting live underground wire.

This institution is an equal opportunity provider and employer.

Your Cooperative will read meters this month.

Take a break!



The meter reading booklets will be mailed out next month.
If we miss you, let us know!

THANK A LINEMAN!

*National Lineman
Appreciation Day
is
Sunday, April 18*

Remember to change those filters!

Look to your home's heating system to find ways to cut costs—especially those dollars spent on energy. One of the most important components of your heating system is the filter. If the dirt and dust are allowed to accumulate for an extended time, the movement of air is impaired and the heating system must run longer to keep you comfortable. A clean filter can save you money on heating costs. It is recommended that you change or clean the filters in your heating system once a month. This is a small expense when you consider the added comfort and reduced operating cost.

IN CASE OF OUTAGE:

*At all hours of the day
or night, you may
contact MYEC by
calling:*

**406-342-5521
or 888-392-5521**

BEFORE YOU CALL...

1. Check all breakers and fuses in the building.
2. Check the breakers below your meter.
3. Check to see if your neighbors have power.

SPRINGTIME IS PLANTING
TIME—

DON'T PLANT THAT TREE
UNDER A POWER LINE!

NUMBERS ARE IMPORTANT!!

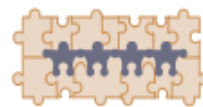
Home phone numbers, and/or cell phone numbers are very important to MYEC. When we need to contact you ahead of time for planned outages, or 10 minutes ahead of an unexpected planned outage, it is necessary to have a current phone number we can reach you at.

If you changed from having a home phone to having just a cell phone, or if you changed your number, please call the MYEC office to let us know.

SCHOLARSHIPS

Students & parents - keep watching MYEC'S web page and Facebook page to see what scholarships are still available through your Cooperative. Go to www.myec.coop.

COOPERATIVES



Businesses People Trust

Manage Your Account



Use SmartHub to...

- Pay Your Bill
- Check Your Energy Usage
- Set Up Auto Bank Drafts
- Update Account Info
- Contact Member Services

Safe, secure & fast!

MID-YELLOWSTONE ELECTRIC COOPERATIVE, INC.